



Impact Report 2024



Index

Introduction

Who We Are3

Leadership4

Our Council

Our Council Priorities6

By The Numbers8

2024 Achievements

Girl Scout Leadership Center10

Girl Scouts on the Go! Mobile Classroom12

Summer Camp14

Highest Awards16

Volunteer Recognition18

Product Programs20

Celebrating Impact: Events That Inspire.....22

Financials

How We’re Funded24

Financial Overview26

Donor List28

The Girl Scout Way

Our Mission
Our Promise
Our Values

“ Girl Scouting
builds girls of
courage, confidence,
and character who
make the world
a better place.”

Girl Scout Promise

On my honor, I will try:
To serve God* and my country,
To help people at all times,
And to live by the Girl Scout Law.

*Members may substitute for the word God
in accordance with their own spiritual beliefs.

Girl Scout Law

I will do my best to be
honest and fair,
friendly and helpful,
considerate and caring,
courageous and strong,
and responsible for what I say and do,
and to respect myself and others,
respect authority,
use resources wisely,
make the world a better place,
and be a sister to every Girl Scout.

Board of Directors

Officers

Dr. Naima Ricks, Chair
Della Walker, Jr., 2nd Vice Chair

Members-at-Large

Asw. Linda S. Carter	Samira Sharif
Dr. Drew Giddings	T. Strong
Nichelle Howe	Jessica Viotto
Trashaun Powell	Delia Ware-Tibbs

Council Staff Leadership

Natasha Hemmings, CEO
Jamie Kay Discher, Chief Operating Officer
Michael Forrestall, Chief Financial Officer
Christiane Gratzel, Vice President of Human Resources
Joie M. Langford, CFRE, Vice President Strategic Philanthropy
Gina Dandrow, Director of Membership
Tenisha Malcolm-Wint, Director of Leadership Center
Michele Milano, Director of Product Programs
Roxie Zeek, Director of Girl Experience

A Letter from the Board Chair and CEO

Dear Friends of Girl Scouting,

Every young person deserves the opportunity to discover their strengths, explore their potential, and build the confidence to lead. That is the power of Girl Scouting. This past year, we have seen how this movement goes beyond troop meetings and badges - into communities where young leaders are raising their voices, taking action, and making a real impact.

At Girl Scouts Heart of New Jersey, we are committed to making sure every child who wants to be a Girl Scout can be one, no matter their circumstances. Through STEM exploration, outdoor adventures, service projects, and civic engagement, our programs nurture skills, build confidence, and inspire members to take on challenges that lead to lasting change.

This year, we reached new milestones that expand access for even more young people. We broke ground on our first Girl Scout Leadership Center in Newark, a vibrant hub for innovation, learning, and community engagement. We rebranded our Mobile Classroom in partnership with Kean University, bringing hands-on learning to more communities. And in the fall, our first-ever I Run for Girls 5K united Girl Scouts, families, and supporters in a celebration of strength and perseverance.

This Impact Report offers a glimpse into our council—our achievements, ongoing initiatives, and, most importantly, the Girl Scouts we serve. Across our region, young people are discovering new experiences, finding their voices and stepping up to do what’s right. Their stories are at the heart of everything we do.

None of this would be possible without YOU! Our members, volunteers, families, donors, and partners help open doors, break down barriers, and create pathways for young people to thrive. Your support ensures every Girl Scout finds a welcoming community, a strong network, and the encouragement to reach their full potential.

Thank you for being part of this journey. The impact of Girl Scouts reaches far beyond our programs, and with your support, we will continue making sure every dream has the chance to become reality.

Yours in Girl Scouting,



Natasha Hemmings
Chief Executive Officer



Dr. Naima Ricks
Board Chair

Building Skills, Inspiring Growth, Creating Opportunities

The Girl Scout Leadership Experience

When young people participate in the Girl Scout Leadership Experience, they gain measurable skills that prepare them to discover, connect, and take action with confidence and purpose. These skills are built through a unique approach that emphasizes collaboration, creativity, and empathy, ensuring every Girl Scout is equipped to not only excel, but to thrive.



Exposing Girl Scouts to a variety of purposeful experiences with consistent, supportive adults, in a safe, encouraging environment is the foundation of the GSLE. The core content pillars allow Girl Scouts to explore their worlds and themselves, often exposing them to opportunities they otherwise never would have access to.

The GSLE comes to life through these three processes:

- **Member Led Activities:**
Participants take the lead, ask questions and explore their ideas.
- **Cooperative Learning:**
Teamwork and collaboration teach problem-solving and critical thinking.
- **Learning by Doing:**
Hands-on experiences inspire creativity, resilience and growth.

STEM

STEM skills are critical for young innovators shaping a better world. Yet, women hold only 27% of STEM jobs in the workforce.* Through science, technology, engineering, and math programs, Girl Scouts normalizes interest in these fields, opening pathways for upward mobility.



Entrepreneurship

Developing entrepreneurial skills helps youth gain confidence to take risks, build independence, and create positive change. In the Cookie Program, Girl Scouts apply key skills like goal setting, decision making and business ethics.

Life Skills

Confidence grows through experiences in healthy living, civic engagement, and communication. Whether staying active, strengthening relationships, or advocating for others, Girl Scouts develop skills to overcome challenges and lead their best lives.



Outdoors

Bringing young people outdoors has long been part of the Girl Scout experience. Many say camping and outdoor activities are a highlight, fostering independence, resilience, and a deeper connection to nature.

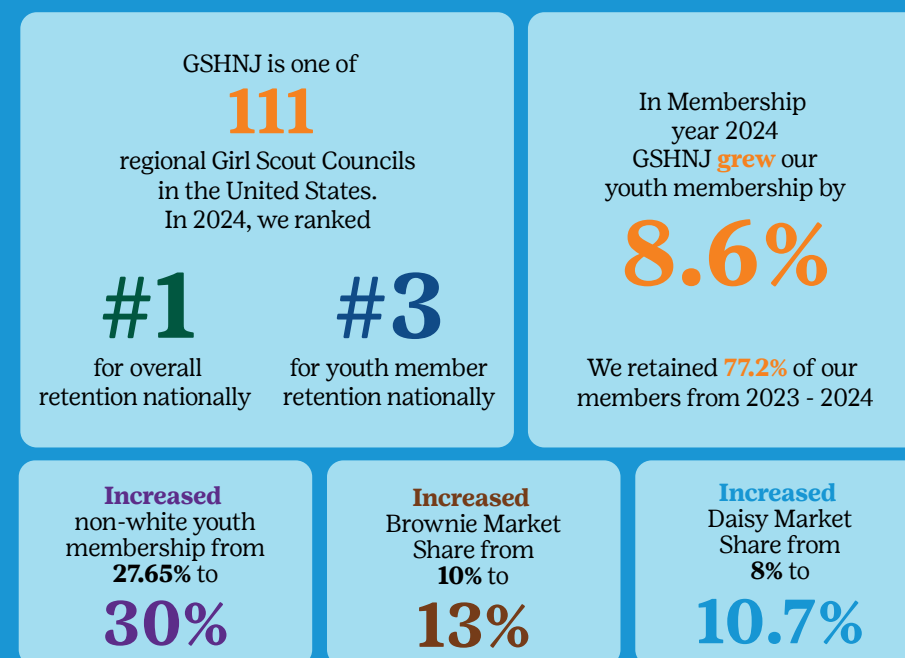
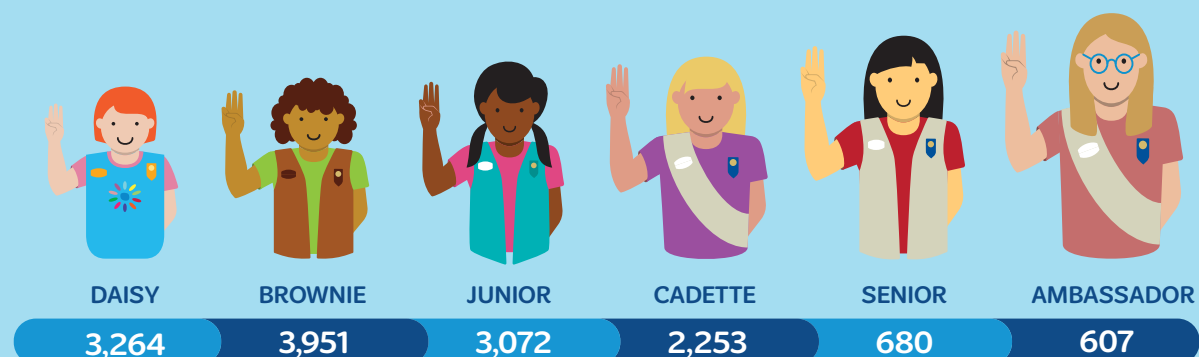
* Women Making Gains in STEM Occupations but Still Underrepresented. United States Census Bureau, 26 January, 2021 <http://bit.ly/4gLEAVW>

By the Numbers

Who We Are, Who We Serve

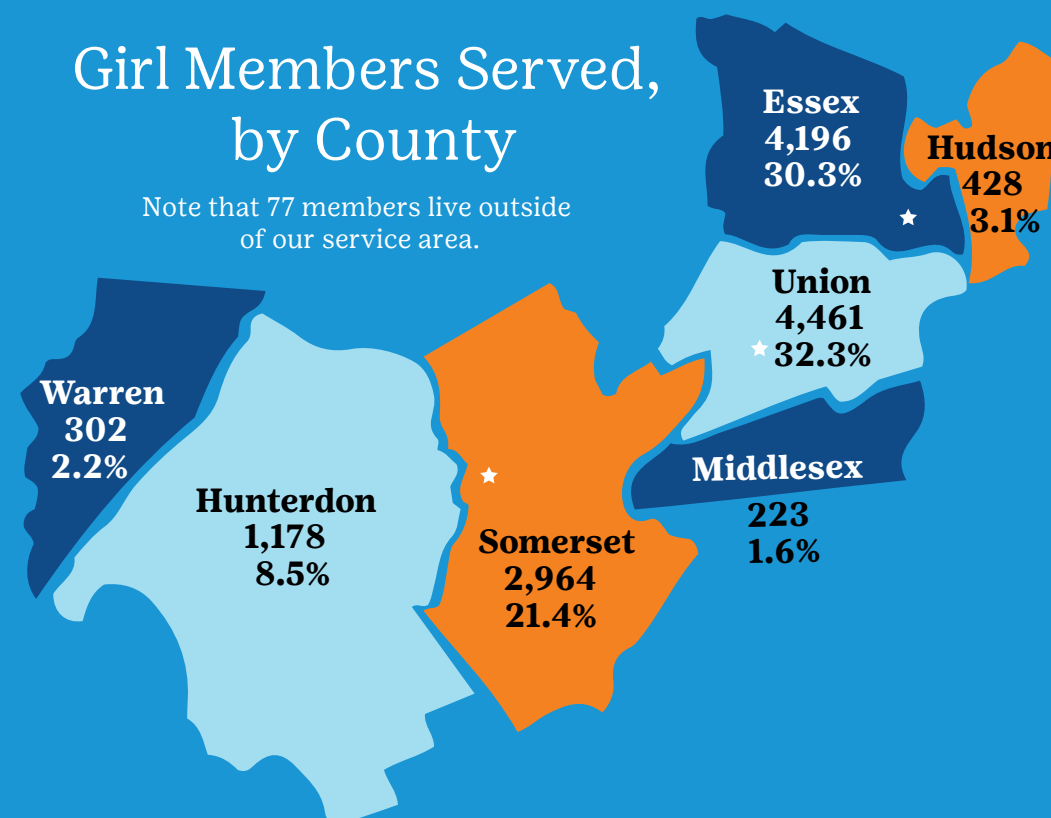


Youth Members by Grade Level



Girl Members Served, by County

Note that 77 members live outside of our service area.



Previous year 622, a 19% increase vs. MY23

Breaking Barriers, and Building for the Future



LEADERSHIP CENTER NEWARK



The **Girl Scouts Leadership Center (GSLC) in Newark** is a transformative investment in expanding leadership opportunities for Girl Scouts in urban communities and beyond. It reimagines how we deliver Girl Scouting—bringing innovative programs and life-changing experiences directly to the places where our members live, learn, and lead.

In June 2024, we broke ground on the 5,436-square-foot facility featuring flexible program areas for workshops, community events, and a dedicated retail space to support Girl Scout initiatives. With on-site kitchen facilities, ample parking, full ADA accessibility, and 24/7 security, the GSLC provides a safe, inclusive environment where Girl Scouts can explore, grow, and thrive.



Leading this initiative is Tenisha Malcolm-Wint, Director of Leadership Center in Newark. With extensive experience in community development and a passion for innovative programming, Tenisha has played a critical role in ensuring the GSLC reflects the needs and aspirations of the Girl Scouts and the greater community it serves.

In partnership with HECTOR Design, a Newark-based architectural and planning firm specializing in community-centered spaces, eleven Girl Scouts serving as Community Design Leaders have been actively involved in shaping the GSLC. Through weekly design sessions, they have influenced everything from the center's layout to the creation of vibrant murals celebrating Newark's culture. They have developed proposals ranging from murals celebrating Newark's culture to designs embodying the Girl Scouts' mission. A key focus has been ensuring the space is multi-functional, allowing multiple programs to take place simultaneously while also offering potential for event rentals. Their work highlights the transformative power of youth leadership and collaboration, helping to create a space where imagination and empowerment thrive.



The GSLC's journey is just beginning. While its doors will officially open in April 2025, its full vision will continue to evolve as new partnerships, funding, and community engagement shape its future. Some features will be ready for the grand opening, while others will unfold over time, ensuring the space continues to grow alongside the members, volunteers, and community it serves.

QUALITIES of a TRUE COMMUNITY? CENTER

- Repurposing / fixing
- greenery / plants / nature / outdoors
- Art
- Welcoming
- Open space
- Shelter
- History / memories
- Enrichment / activities
- Culture
- Safe space
- Inclusive
- Peaceful
- Comfort
- Fun
- Innovative
- People connecting

Mobile Classroom

Expanding Access. Inspiring Innovation.

In September 2024, the **Girl Scouts on the Go! Mobile Classroom** was relaunched, Powered by Kean University, redefining how Girl Scouts engage with STEM. By breaking traditional service models, this initiative brings hands-on STEM programming directly to our members, ensuring access regardless of circumstance or location.



The 25-foot Mobile Classroom serves Girl Scout Daisies through Ambassadors, delivering learning to communities through virtual and augmented reality, circuitry, and computer-aided design. A built-in whiteboard and video capabilities support dynamic instruction, while a self-sufficient generator ensures it can operate anywhere. Each year, it can provide 2,500 learning opportunities, expanding access for our youth in underserved areas and preparing them for leadership in a tech-driven world.



Since the rebrand:

252

Girl Scouts reached through
Mobile Classroom programs

27

hands-on
STEM
programs

delivered across

12

communities

Cranford

Plainfield

Flemington

Scotch Plains

Hoboken

S. Plainfield

Lebanon

Stewartsville

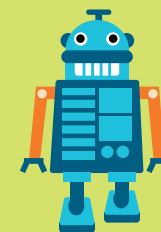
Montgomery

Westfield

Olwick

West Orange

Featured programs:



Robotics



3D
Design



DNA
Science



The Physics
of Self-Defense

Community events:

NEW
ARK
ARTS
FESTIVAL



Summer Camp

Where Adventure and Growth Begin

Camp isn't just a place—it's a community where Girl Scouts build confidence, independence, and lifelong friendships while exploring the outdoors. Camp Hoover in Middleville, The OVAL in Maplewood, and Camp DeWitt in Hillsborough provide outdoor experiences that inspire growth, connection, and adventure.

Camp Hoover offers immersive overnight experiences, while The OVAL and Camp DeWitt provide weekly day camp programs. In 2024, Camp DeWitt hosted its final summer camp season but remains open for rentals and year-round programming.



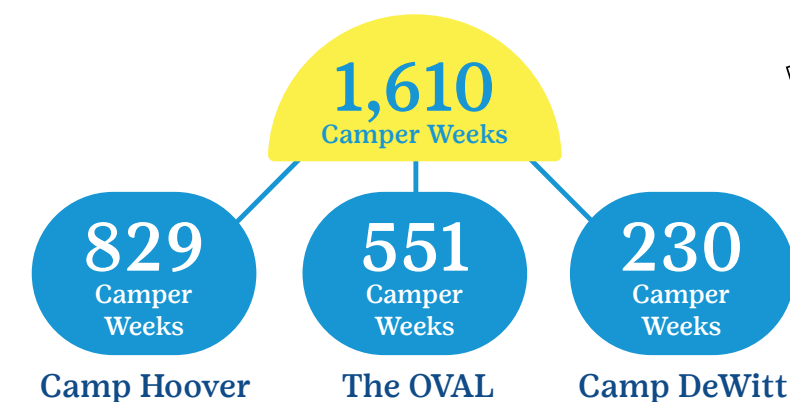
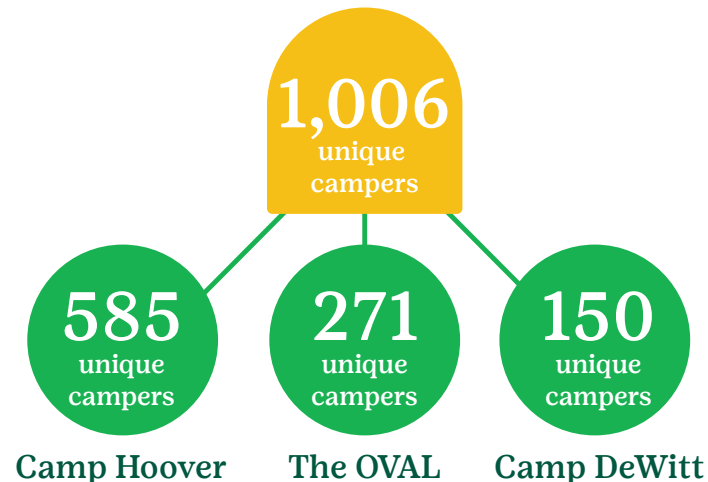
This summer, campers embraced new traditions, including a Summer Olympics theme at The OVAL and Camp DeWitt in honor of the 2024 Paris Olympics, with Camp Hoover celebrating camp-wide. Whether paddling across the lake, tackling a ropes course, or gathering around the campfire, Girl Scouts continue to explore, unplug, and grow—at camp and beyond.

87%

of campers made a new friend.

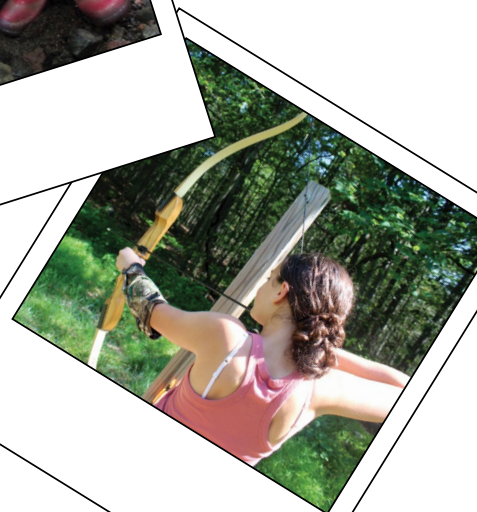
78%

of campers got to know someone different than themselves.



“My daughter found the kids and counselors so friendly and fun and approachable. It was a real independence exercise for her in being responsible for her items and speaking up if she needed something. We were so impressed with how she handled it all- but credit to the team at OVAL for making the all around experience so wonderful.”

- Day Camp Parent



“Every time my daughter goes to Camp Hoover, she always comes back with so much more confidence about herself and gets better at working with others.”

- Sleepaway Camp Parent

Recognizing Leadership, Service, and Impact



Gold Award Class of 2024

(April 2023 - March 2024)

Jennifer Bekos*	Caroline Heinze*	Kacey McNamara*	Helena Ruta*
Pavini Bhardwaj*	Elizabeth Huggins*	Gabrielle Minieri*	Daivya Sadhvani*
Charlotte Bruchey	Kavya Iyer*	Claire Murphy	Gianna Schembari*
Adelaide Coster*	Marcella Junkroft*	Kathleen O'Brien*	Maisie Shimko
Jamie Cridge*	Lila Keller*	Giavanna Pechilio	Jola Strayhorn*
Josie Dambeck*	Hailey Kopp*	Breona Pizzuta*	Abigail Tennaro*
Margaret Danenhauer	Avery Lacon*	Hannah Plummer*	Olivia Terpin*
Isabella Davis	Ava Leone*	Isabella Pombrio*	Jenna Weinberg*
Eden Gabai*	Maria Loss*	Makensie Rief	Sophia Xenakis*
Ella Grinbaum*	Molly Love*	Apolonia Romanek*	
Laurel Hanrahan*	Amelia Ludwig*	Katherine Ruggiero	

**Denotes Change Maker Award recipients, who earned all three Highest Awards.*



Mental Health Matters: Equipping Students with Tools for Well-Being

Breona Pizzuta Received \$10,000 GSUSA Gold Award Scholarship

Seeing the increasing mental health challenges among high school students, Breona Pizzuta of Cranford (SU 48) created Mental Health Matters, a curriculum that teaches stress management and healthy coping strategies. Through research, she discovered that untreated depression is a leading cause of suicide and developed a proactive solution. Endorsed by mental health professionals, her curriculum has been implemented at her school and shared with others, providing students with essential tools to build resilience. Now part of her school's counseling program, it continues to support students through ongoing collaboration with counselors and peer leaders.



Silver Award Highlight - Casa Bat

Claire C. (Troop 20891) and Eva "Max" M. (Troop 20248) of Maplewood (SU 28) collaborated across troops to tackle an environmental challenge at Camp Hoover—bats roosting in buildings without alternative shelters. Understanding the vital role bats play in the ecosystem and the need for safe spaces for both bats and people, they created Casa Bat, a sustainable conservation and education initiative. They built and installed bat houses along the Nature Trail, providing proper roosting habitats while creating an interactive learning experience for campers. They developed a bat education curriculum and trained camp counselors to teach future campers about bat conservation.

Bronze Award Highlight - Healthy Snacking

Emma C., Allie C., Alayna E., and Aubrey G. of Troop 90260 (Harmony Township, SU 91) set out to make healthy eating more appealing and accessible for young students. Partnering with teachers and the school nurse, they led interactive presentations for K-4th graders on the benefits of nutritious snacks. Through engaging activities and easy-to-make recipes, they encouraged students to make healthier choices, creating a lasting impact on their school community.



VOLUNTEERISM: The Heart of Girl Scouts - Giving Time, Talent, and Support

Adult Volunteers are the heart of our movement, inspiring more than 13,000 Girl Scouts across the council with their generosity, courage, and dedication. From behind-the-scenes organizers to bold leaders shaping the future, they drive every Girl Scout experience. Troop leaders, service unit team members, committee champions, outdoor enthusiasts, and community partners each bring unique strengths, making the impossible possible. Every moment of discovery, every badge earned, every campfire built, it's all thanks to them. We celebrate these extraordinary individuals who show up, lift up, and make a difference every day.

Volunteer Recognition Honorees



The Honor Pin, established by GSUSA in 1987, recognizes exceptional service in delivering the Girl Scout Leadership Experience with measurable impact across multiple service units. **Laura Hornby** exemplifies this commitment through her leadership of Trailblazer Troop 80400 and her pivotal role in SU 86, supporting 375 members across eight Hunterdon County communities since 2020. She has driven recruitment efforts, expanded outdoor and service opportunities, and strengthened communications. Amid the challenges of COVID-19, she created the WOO! Winter Outdoor Odyssey patch, inspiring Girl Scouts with 64 seasonal outdoor activities, later expanding the program along the Delaware River Tow Path. As a GSHNJ Experienced Outdoor Trainer, Laura has empowered hundreds to embrace the outdoors with confidence. Her unwavering dedication and innovative spirit make her a true asset to Girl Scouting and the communities we serve.

GSHNJ provides training to over **8,000** caring adults annually to be mentors and leaders to more than **13,000** Girl Scouts

2024 Adult Recognition Honorees

Appreciation Pin

Lori Albanese, SU 82
Terry Bierwisch, SU 71
Elizabeth Capezio, SU 26
Kate Facto, SU 28
Kathleen Fitzgerald, SU 64
Deborah Fox, SU 72
Antanina Imbriaco, SU 64
Kristina Junkroft, SU 53
Susan Mayer, SU 72
Cristina Mendez, SU 53
Anna Nelson, SU 28
Susan Parola, SU 72
Theresa Steer, SU 56
Gina Stravic, SU 71
Patrick Szary, SU 72
Michelle Tomenchok, SU 72
Michele Tuck, SU 72

Volunteer of Excellence

Nicole Beniamini, SU 72
Megan Brenan, SU 52
Sandra Cassidy, SU 53
Dawn Cebula, SU 74
Sally Chew, SU 28
Stacy Grady, SU 86
Katie Hutzayluk, Troop 60725
Daniel Kestin, SU 28
Catherine Matera, SU 52
Melissa Miller, Troop 20153
Kathleen Mills, Troop 60003
Trusha Palkhiwala, SU 28
Kristina Rodriguez, SU 66
Jessica Romero, Troop 40042
Pamela Short, Troop 80250
Amea Sierko, SU 52
Jacqueline Sulikowski, SU 53

GSHNJ Dedicated Leader Award

Michelle Anderson, Troop 62409
Jamie Angosto, Troop 62517
Caryn Antunes, Troop 60125
Rhonda Bridges, Troop 20134
Katherine Chapman, Troop 60725
Jill Darby, Troop 60788

Jill Giuliano Kenny, Troop 62409
Cara Holzer, Troop 63200
Jamie Hovick, Troop 40138
Sarah Jones, Troop 60788
Elissa Meth Kestin, Troop 21126
Shannon Quinn, Troop 60509
Caitlin Quinones, Troop 60125
Erica Swanson, Troop 40850
Karen Tershana, Troop 20458
Megan Tozzi, Troop 61149
Melissa Wahlers, Troop 20251

Rookie of the Year

Anne Albright, Troop 60065
Michelle Campbell Jordon, Troop 61178
Victoria Carey, SU 71
Anna Cheung, Troop 61158
Rebecca Hartranft, SU 28
Renee Holmes-Solomon, Troop 40143
Megan Incantalupo, Troop 67476
Eliza Kaplan, Troop 20065
Tatiana Miller, Troop 61178
Kristen O'Donnell, Troop 60065
Jean Monique Severino, Troop 40143
Catalina Villasuso, Troop 12933

Volunteer Service Award

15 Years of Volunteer Service
Terry Bierwisch, SU 71
Kerri Jordan, SU 71
Erin Sweeney, SU 21
20 Years of Volunteer Service
Antanina Imbriaco, SU 64
Marcee Rogers, SU 52
Kelly Selikoff, SU 30
Jettie Tyler, SU 21
Lori Wighard, SU 62
30 Years of Volunteer Service
Lorette Cheswick, SU 76
Karen Flood, SU 76
35 Years of Volunteer Service
Lynn Earle, SU 10
Susan Lacerda, SU 71
40 Years of Volunteer Service
Mary Ellen Day Coralyn Vossler, SU 30

45 Years of Volunteer Service
Sherley Penrose, SU 64

Membership Tenure

20 Years of Membership
Terry Bierwisch, SU 71
Kelly Selikoff, SU 30
25 Years of Membership
Carolynn Briggs, SU 63
Dina Fornataro-Healey, SU 64
Sara Vossler, SU 30
30 Years of Membership
Elizabeth Bouwman, SU 71
Victoria Fernandez, SU 21
Kerri Jordan, SU 71
35 Years of Membership
Lynn Earle, SU 10
Karen Flood, SU 76
Carrie Herrera, SU 71
Kathryn Paragano, SU 76
Erin Sweeney, SU 21
40 Years of Membership
Kristen Redmond, SU 71
45 Years of Membership
Susan Lacerda, SU 71
50 Years of Membership
Wendy Deer, SU 27
Sherley Penrose, SU 64
Laura Rasmussen, SU 63
55 Years of Membership
Mary Ellen Day Patricia Helwig, SU 71
60 Years of Membership
Gail Moose, SU 76
75 Years of Membership
Peggy Dry, SU 73
80 Years of Membership
Edith Young, SU 30

Community Partnership Award

Jenny Gaus Meyers, Morris County Park Commission
Montclair State University, Public Health Department

Product Programs

Fall Product



\$112,511

Proceeds earned
by troops



Cookies

Troop Participants
in the
2024
COOKIE
PROGRAM

1,030
Troops

\$1,349,671
Proceeds earned by troops

76,439
Cookie Packages
donated in 2024

\$1.5
million
in cookies sold



Cookies Sold



Events That Inspire

Women of Vision 2024

On May 1, 2024, Girl Scouts Heart of New Jersey hosted its annual Women of Vision Awards Breakfast at Nanina's in the Park in Belleville. This inspiring event honored extraordinary leaders who champion the advancement of girls and serve as role models for the next generation. With over 260 entrepreneurs and corporate professionals in attendance, the morning celebrated individuals making a lasting impact on their communities. The 2024 Women of Vision Honorees included Inspiration Award recipient Deanna Sperling, President and CEO of RWJBarnabas Behavioral Health Center; Trailblazer Award recipient Celestina Quintana, Owner/Operator of McDonald's Corp.; and Man Enough to be a Girl Scout Award recipient Calvin Souder, Founding Partner of Souder, Shabazz & Woolridge Law Group.



I Run for Girls 5K

On September 29, 2024, Girl Scouts Heart of New Jersey hosted its inaugural I Run for Girls 5K at Tamaques Park in Westfield. More than 300 registered runners showed up, proving that a little rain couldn't dampen their spirit. Participants of all ages and abilities, including seasoned runners, families, and those using strollers and wheelchairs, took on the USATF Grand Prix sanctioned course in support of GSHNJ. The professionally timed race, managed by RacingNJ with Practice Hard overseeing the course, featured competitive and fun categories, with awards given in multiple divisions. More than just a race, this event brought the community together in support of programs that empower our members through leadership, service, and personal growth.



Sustaining Our Mission

**Our funding
comes from**



primary sources

Product Programs

Proceeds from Fall Product
and Girl Scout Cookie
Programs

Programming Fees

Participation fees for
summer camp, events,
and other programs

Philanthropy

Charitable donations from
individuals, corporations,
foundations, and
other partners

Retail

GSHNJ store proceeds from
badges, uniforms, gifts, supplies
and merchandise

Other Income

Investments and
miscellaneous revenue

Your contributions help us build Girl Scouts
of courage, confidence, and character who
make the world a better place.

Investing in Girl Scouts

Revenue

Donations	\$515,545
Product Sales, Net	4,301,304
Retail Sales, Net	232,547
Program & Camp	1,379,142
Rental Income	176,500
Nonoperating Income	486,573
TOTAL:	\$7,090,647

Assets

Cash & Cash Equivalents	\$2,636,934
Investments (at fair value)	2,117,844
Accounts Receivable, net	186,290
Inventory	366,806
Prepaid Expenses	75,480
Long Term Assets	7,340,407
TOTAL:	\$12,723,761

Expenses

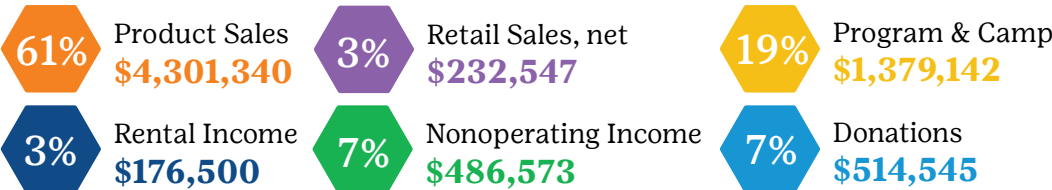
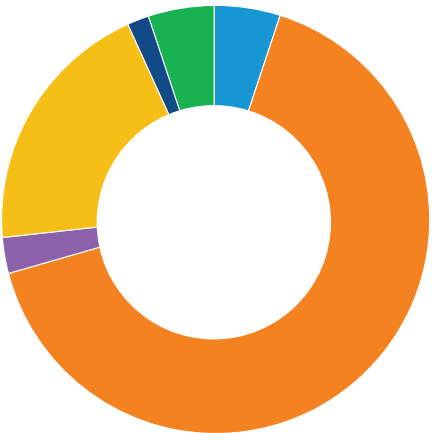
Program	\$6,814,212
Administrative	583,005
Fundraising	299,241
TOTAL:	\$7,696,458

Liabilities and Net Assets

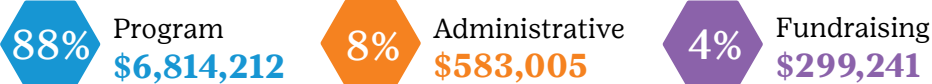
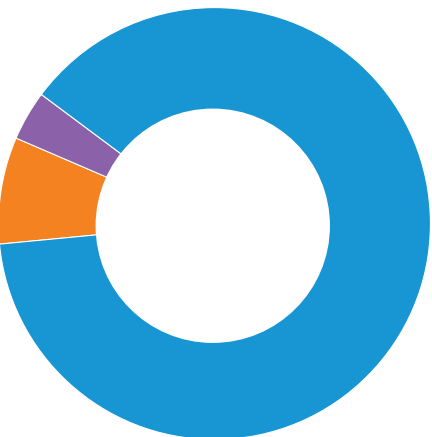
Accounts Payable & Accrued Expenses	\$491,973
Other Current Liabilities	208,772
Deferred Revenue	362,517
Program Deposits & Custodial Funds	19,643
Non-Current Liabilities	1,770,963
Subtotal Liabilities	2,853,868
NET ASSETS	9,869,893
TOTAL:	\$12,723,761

Financial Breakdown

Revenue



Expense



Champions Behind Our Mission

The generous support of corporations, foundations, and individuals helps to provide financial assistance for Girl Scouts who otherwise wouldn't have access to the Girl Scout Leadership Experience and helps to underwrite the cost of innovative new programs. This support offsets the cost of membership fees, uniforms and insignia, supplies, camping, travel expenses, and the development of new experiential programs for the thousands of Girl Scouts throughout our service area.

Thank you for investing in the next generation of leaders!

Contributions listed are from October 1, 2023 to September 30, 2024. We're grateful for every gift we receive, however due to space restrictions we can only list gifts of \$250 and above.

\$100K+

The Victoria Foundation

\$25K+

Estate of Mary G. Dart

\$5K+

Peggy A. Dry
Nancy Henseler
The Large Foundation
New Jersey Manufacturers Insurance Company
L. Rothberg Memorial Scout Trust Fund

\$50K+

State of New Jersey
Verizon

\$10K+

Bluepoint Wind
Fiserv
Girl Scouts of the USA
E. J. Grassmann Trust
City of Hoboken
William and Ida M. Kiefer Trust
Orange Orphan Society
The Plainfield Foundation
RWJBarnabas Health
Marguerite Russ Risley and
Marshall E. Risley Trust
Souder, Shabazz & Woolridge Law Group
Eleanor E. Willert

Donor Spotlight

\$2.5K+

Altice USA, Inc.
Anonymous Donors
Bloomberg LP
Bridgewater Commons Mall, LLC
Diane Cifelli
Citizens Bank
Colgate-Palmolive
ExxonMobil Foundation
Giddings Consulting Group

\$1K+

Capital Impact Group
Celeste Campos
Chris Carswell
Malissa Cass
CVS Health Foundation
Deborah Diamond
Ericsson Inc.
GSE Worldwide Inc.
Sherry Grobstein
Veronica Guarraia
Dana Harrison
Ryan Harster

\$500+

Michael J. Manley
The Mercadien Group
Microsoft Matching Gifts Program
Charles Mierswa
Harold Miller
Kevin P. Mulcahy
Newark Alliance
New York Life
NRG Energy, Inc.
Anne Oconnell

Natasha Hemmings
Insperity
Johnson & Johnson
Garrie Lewis
Montclair State University
New Jersey Business & Industry Association
New Jersey Innovation Institute
Peapack-Gladstone Bank

Heidi Hemmer
Horizon Blue Cross Blue Shield of New Jersey
Nichelle D. Howe
Karen Mac Nish
Patti Massaro
The Merck Foundation
John Metz
Tara L. O'Brien
Octoberfest Participants
Mary Page
Paramount Assets, LLC

Organization of Nurse Leaders of NJ
Joanne Otlowski
Jonathan Paone
Vicki Paulson
Pennoni
Stacey Plummer
RWJBarnabas Behavioral Health
RISE Fitness
Rotary Club of Fanwood-Scotch Plains
Michelle Russell

Jackie S. Pennella
The PNC Financial Services Group
Celest Quintana
Rey Financial Group
The Richmond Foundation
Borough of Roselle Park
Della Walker, Jr.
Magda N. Yrizarry
Debra L. Zvanut

Naima Ricks, Ph.D.
Spencer Savings Bank
State Street
Edmund G. Taussig and Frances Kath
Taussig Foundation, Inc.
Troop Account Donations
Union County Democratic Committee
Peg Velden
Vertilocity
Tiffany Wilson

Gail Kornberger Sheedy
Deanna Sperling
Pat Steingall
Judith Tanini
Patrick Terborg
Pooja Varun
Vital IV Infusions
Susan Wait
Zago Manufacturing Company, Inc.

Our Donors

\$250+

Mitch Livingston
Megan Lunde
Leslie-ann Lukoma
Mabel’s Labels
Carole L. Mackenzie
Ruth E. Maloney
Felicity Marinello
Dominique Minars
Vanessa Monell
Montecalvo/Bayshore Family of Companies
Nonprofit Professionals of Color Collective
Johanna Nurjahan
Donna Pennella
Michele Phelps
PSEG Power of Giving Campaign

Daisy Circle

Ildiko Acs
Danielle Bonastia
Malissa Cass
Lydia Smith-Boyd
Amy Brainard
Jamie Kay Discher
Nicole DuBois
Pam Jernstedt-Duhaime
Patricia Dziamba
Justin Francomacaro
Christiane Gratzel
Natasha Hemmings
Laureen D. Higgins
Deb Hooker
Meghan Hrinkevich
Marianne Lloyd
Leslie-ann Lukoma
Megan Lunde

Donate:

Make an individual gift, join our Daisy Circle monthly giving program, create a planned giving strategy, or support a fundraising event.

Learn more at gshnj.org/donate

Volunteer:

Make a direct impact on the lives of youth by leading or supporting a troop, helping at summer camp, or assisting behind the scenes.

Learn more at gshnj.org/volunteer

Daisy Circle is GSHNJ’s monthly giving campaign. By committing to a monthly contribution, these donors give members consistent access to life-changing experiences and opportunities through Girl Scouting.

Quality Health Care, Inc
Carmen Reino
Frank Reiss
Eileen Rust
Traci Sanders
Latoya Singleton
Catherine Souder
S&P Global
Kay Stephenson
Winslow Radcliffe-Trenner
Pamela Touretzky
Troop 61253, Service Unit 75
Robin Umber
Jessica Viotto

Kristy Mercado
Dominique Minars
Johanna Nurjahan
Vicki Paulson
Jackie S. Pennella
Naima Ricks, Ph.D.
Debra Rutt
Ruth Sager
John Shabatura
Judy Stahl
Kay Stephenson
Jeanne Van Steen
Alana Vega
Della Walker, Jr.
Tiffany Wilson
Tenisha Malcolm-Wint
Roxie Zeek

In Tribute

In memory of Emily Lynne Able-Allenspach
Richard Chamberlain

In Memory of Genevieve Bartol
Eileen Rust

In Memory of Susan Best
Kay Stephenson

In Honor of Scout Amelia Bradshaw
Alex Khrizman

In Memory of Theresa Cafiero
Elisea Floyd

In Honor of Elaina Van Kirk & Alison Diflorio of Exude HC
Just Strategies

In Honor of Franckel Denize
Izabelle Denize

In Honor of Nicole DuBois
Carmen Suero
Guilene Cherenfant

In Memory of Leona Dunn
Mary Beth Dunn

In Honor of Bella Fajardo
Danielle Lasky

In Memory of Edythe Claire Frank
Walter Boright

In Honor of Deb Hooker
Patti Massaro

In Honor of Deb Hooker and Camp Hoover
Barbara Heath

In Memory of Jerlene A. Joseph
MindThrive Publishers

In Memory of Heather Rose Kiss
Darlene Kiss

In Memory of Eugenia M. Krauser
Natalie Krauser

In Memory of Dolores Kresge
Deb Hooker
Harold Miller

In Honor of Priscilla Leung
Teresa Brown
Amy Lipshy
Andria Kwock-Wong

In Memory of Eileen and Marcia
Andrea Schaffer

In Memory of Corinne Maskaleris
Carol Ball

In Honor of Madelyn R. McCarthy
Natalie Krauser

In Memory of Donald DeWitt Nichols Jr
Brenda Miles

In Honor of Nicole Parisi
Carolynn Briggs

In Honor of Jaclyn S. Pennella
Ashley Rey

In Honor of Betty Riker
Gerald E. Maloney

In Memory of Marilyn A. Siegel
Sharon Lawton

In Honor of Deanna Sperling
Vicki Robinson

In Memory of Idamae Trenner
Werner Brell
Deborah Diamond
Liz Flanagan
Barbara Gallup
Joan Geiger
Debbie Gordon
Laura Greene
Hoover Women
Margaret Legowski
Nancy C. Lenvin
Patti Massaro
Anne Oconnell
Kathleen OConnell
Mary Page

In Memory of Sarah “Sally” Walsh
Monique Biddle
Joseph Castro
Jo & Bob Celentano
Michael Cohen
Sheila Dick
Virginia Gano
Kate Kelly
Julia Lapan
Barbara Rummel
Carolyn Tangreti
Robin Umber

In Memory of Alda Jean Watson
Anju Rajashekar
Carol Pindar
Joan P. Gaylord
Dan Whitman
Jeff Kessler

In Honor of Roxie Zeek
Douglas Zeek

In Honor of Deb Zvanut
Haley Talley

In honor of WF Troops 20 & 766-as Leader, best memories @ camp
Ruth E. Maloney

Kevin P. Mulcahy
Patricia Rolston
Helen T. Trpisovsky
Robin Umber
Susan Wait
Nancy A. Walrath
Debra L. Zvanut



girl scouts 
heart of new jersey

908.518.4400 | www.gshnj.org

  
@gsheartofnj