

Lodging at The OVAL



Kresge Kottage

Capacity: 20

3 bathroom stalls

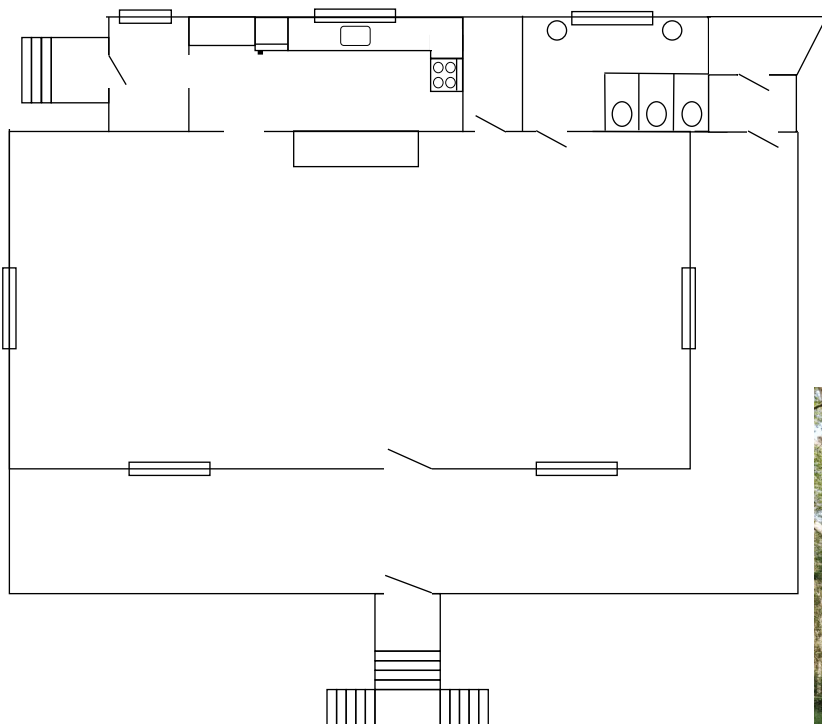
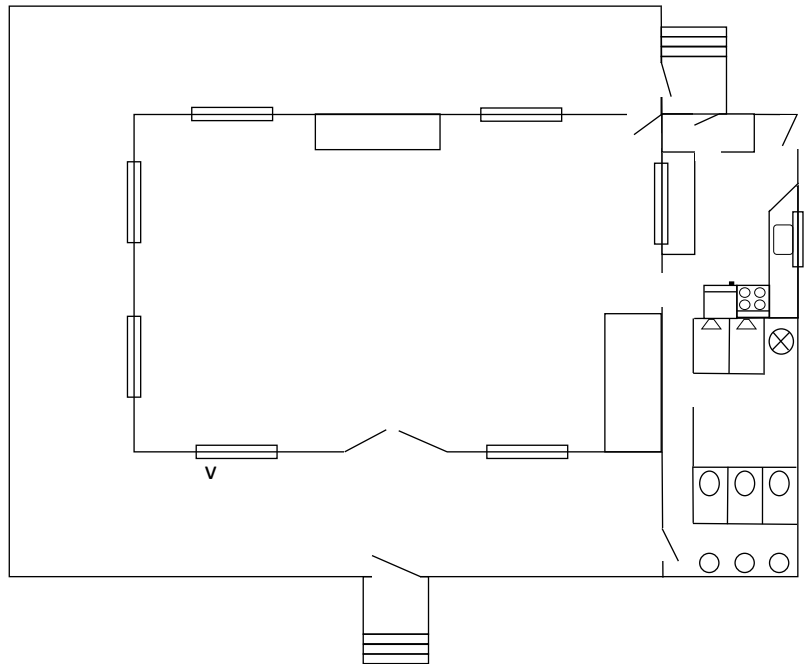
3 bathroom sinks

2 Showers

Oven, refrigerator, kitchen sink

Enclosed Front, Side & Back Porch

2 beds, all other sleep on the floor



Hannan Hall

Capacity: 16

3 bathroom stalls

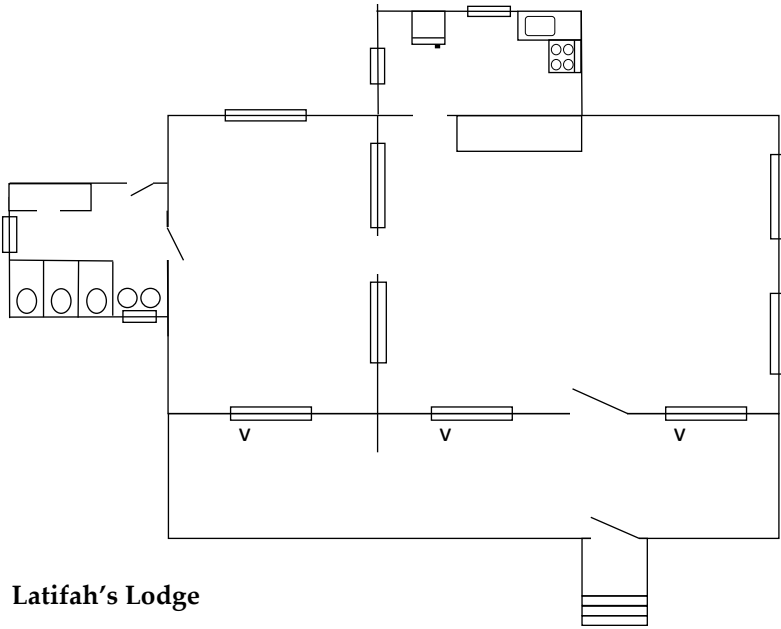
2 bathroom sinks

Oven, refrigerator, kitchen sink

Enclosed Front & Side Porch

2 beds, all others sleep on the floor





Latifah's Lodge

Capacity: 16

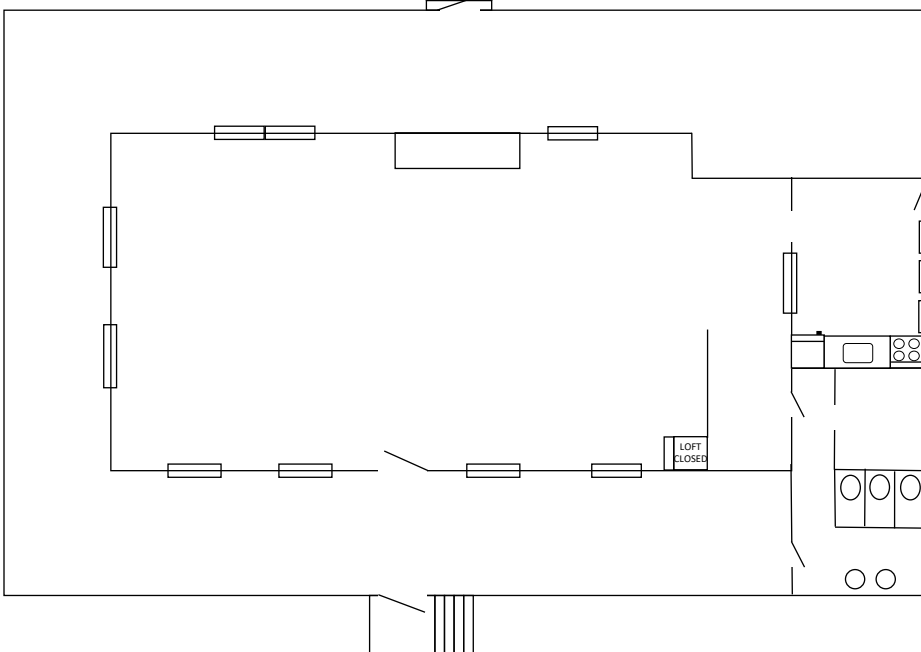
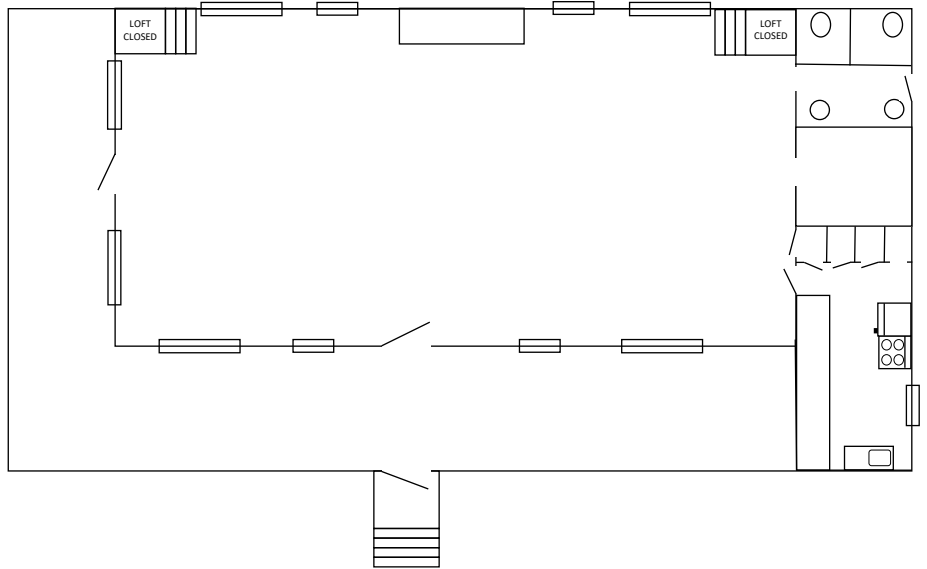
2 bathroom stalls, 2 bathroom sinks
 Oven, refrigerator, kitchen sink
 Enclosed Front & Side Porch
 2 beds, all others sleep on the floor



Camp Natalie Kipp

Capacity: 16

3 bathroom stalls, 2 bathroom sinks
 Oven, refrigerator, kitchen sink
 Enclosed Front Porch
 4 beds, all others sleep on the floor



Wy.so.mi.sh. Cabin

Capacity: 16

3 bathroom stalls, 2 bathroom sinks
 Oven, refrigerator, kitchen sink
 Enclosed Front, Side, & Back Porch
 2 beds, all others sleep on the floor



West South Orange Avenue, Maplewood, NJ

Adjacent to South Mountain Reservation

[Google Maps – The OVAL](#)

GPS Coordinates: N40.748673, W74.284601

Camp Phone: 908-393-0902 (April – October)

From South Orange Avenue, from Newark (Route 510 traveling West): From the intersection of South Orange Avenue and Valley Street (South Orange Village business center) – travel 1.4 miles to the traffic light at Glenview Road. Proceed slowly. Just beyond the traffic light you will see an arched stone bridge. Immediately after the bridge turn RIGHT onto an unpaved road. You will see an “Official Use” sign ahead, and then bear RIGHT – this is the camp road entrance to The OVAL. The camp road is ONE WAY.

From South Orange Avenue, from Livingston (Route 510 traveling East): Follow South Orange Avenue through the South Mountain Reservation and up the hill through the “s” turns. At the top of the hill is a traffic light (Glenview Road). Turn LEFT onto Glenview Rd. and make a U-turn back onto South Orange Ave. heading west. Proceed slowly. Just beyond the traffic light you will see an arched stone bridge. Immediately after the bridge turn RIGHT onto an unpaved road. You will see an “Official Use” sign ahead, and then bear RIGHT – this is the camp road entrance to The OVAL. The camp road is ONE WAY.

