



GIRL SCOUTS HEART OF NEW JERSEY happenings *from the* heart



Please e-mail your newsletter submissions to: nzimmerman@gshnj.org

December 04, 2009 SUM.2

inside this issue

- important updates
- link to the minutes from the last SUM conference call (11/18)
- departments updates

The latest emergency cards are green please dispose of any other color emergency card.

important dates

The SHARE Service Unit Incentive Deadline has been extended to:

Monday, February 1st, 2010.

Service Unit Manager Meeting Dates

Montclair	1/26/10	3/23/10	5/18/10
No. Branch	1/06/10	3/03/10	5/05/10
Westfield	1/25/10	3/15/10	5/11/10
Teleconference	2/16/10	4/20/10	

council closings

Council offices will be closed;
Dec. 10th at 12 noon for staff in-service

Dec. 25th to reopen **Monday, Jan. 4th**

The *Membership Field team* will be out of the office **Dec. 7-9** for training to learn new ways on how to better serve you. Voicemail and email will be addressed upon return. In the event of an emergency please contact your service center. (Snow date is **Dec. 14-16**)

important updates –

volunteer management system update

Starting now and until further notice – The Volunteer Management System procedures have been modified so that new volunteers, who have successfully completed their background check, can take On-line Orientation, register, and take Basic Leadership Training while waiting for their references to be sent to Council. Troop numbers and bank account letters will be released once a volunteer completes the approval process and receives notification via email and/or letter. At this point girls may be assigned and troops may begin to meet. Council staff looks forward to partnering with Service Unit Managers and Teams to make this a successful adaptation.

banking updates

• Please ensure all troop/SU bank accounts have been switched over to the Girl Scouts Heart of New Jersey tax I.D. Prior tax I.D.'s are no longer in existence.

membership directors' cafés

Join your Membership Segment Directors and Senior Membership Director for open forum chats. All volunteers are welcome. Cafés will be scheduled monthly at alternating Council Service Centers. Times and days of the week will vary in all locations for your convenience. Our first was held in Westfield on November 16th. The next two dates and locations are as follows:

Location: North Branch Service Center, 1171 Rt 28, North Branch
Date: Thursday, December 10, 2009
Time: 10:00am - noon
Please RSVP by 12/9/09 to Pam Jernstedt-Duhaime, pjrnstedt@gshnj.org, 908-725-1226x118

Location: Montclair Service Center, 120 Valley Rd., Montclair
Date: Saturday, January 23, 2010
Time: 10:00am - noon
Please RSVP by 1/22/10 to Lisa Mintz, lmintz@gshnj.org, 973-746-8200x122

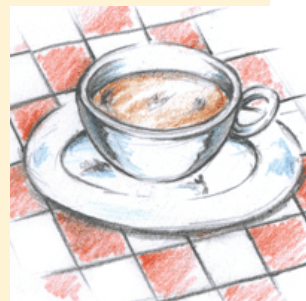
• All troop bank accounts must be opened under the troop address (leader, troop treasurer...) and not a service center address, to ensure statements are sent to the troop.

• All troop bank accounts must have the five digit troop number.


** Currently there are many troop accounts open under the same troop numbers and it is causing considerable confusion and administrative expense. The county codes for troop numbers are in place to avoid duplication of troop numbers across the Council. Likewise there are stacks of troop bank statements arriving at Council on a monthly basis. It is crucial we get this under control and we need your help. Thank you.

background check update

We have contacted Intellicorp, our background check firm, to investigate if volunteers could enter their own Social Security numbers into the system. The answer is **yes** and a web portal is being built by Intellicorp to handle this. This should be ready for use sometime in January. We appreciate your patience.





GIRL SCOUTS HEART OF NEW JERSEY
happenings *from the*
heart 

department messages –

camp

2010- 2011 – Camporees at Camp Hoover – All Service Unit Managers should have received the paperwork for the 2010-2011 Camporees. All applications are due back to the North Branch Service Center by **December 18th, 2009** - Please contact Deb Hooker at dhooker@gshnj.org with any questions you may have.

Save the Date

Work Weekend at Camp Lou Henry Hoover – **March 19th to 21st, 2010** – Volunteers are needed to help prepare the 340-acre site for the spring and summer camping season – troops, families and individuals are welcome!

GSHNJ – Camping Opportunities

Looking for a getaway for your troop? Interested in an outdoor experience? GSHNJ camps are the place to be! The Oval, Camp DeWitt and Camp Hoover offer a variety of camping experiences from pitching your own tent to cabin camping. Sites are available on the weekend. Sites can also be rented during school breaks, long weekends or at the beginning of summer recess. To check on availability go to www.gshnj.org/camps or email mperry@gshnj.org to receive an application and site-specific information.

retail

GSHNJ Council Shops present “A December to Remember!” Every customer who makes a purchase in any of the three Council shops during the month of December will receive a “mystery” discount off their entire purchase upon checkout. Discounts will range from 5% to 25%.

IMPORTANT NOTE: Cookie Credits from the Fall 2008 Cookie Sale expire on December 31, 2009. Please plan accordingly, as our Council Shops will be closed from December 25th and will reopen Monday, January 4th.

Eagle Island merchandise can now be ordered by mail. For a list of available merchandise and to download an order form, please go to: <http://www.gshnj.org/index.php?p=419>. Thank you.

training

For Service Units or communities that need additional volunteer training opportunities (not listed on the training calendar) please contact our training department (Lori Coleman, lc Coleman@gshnj.org or Cookie Green, cgreen@gshnj.org). The Council trainers are happy to schedule special sessions for groups of 10 or more volunteers. It is helpful to have several options available for dates and times so the trainers can make accommodations as quickly as possible. If you have a location available for training, our trainers are happy to accommodate training at your site. Thank you.

programs, programs and more programs in January...

Sold On ME!	January 5	Go For It! (OLD)	January 11	Junior Water Fun	January 23	Brownie Sweet Shoppe	
Mellow Out	January 6	Lead On!	January 12	Silver Career		(3pm)	January 31
Drawing & Painting	January 9	Space Exploration	January 12	Exploration	January 23	Speaking in Sign	January 31
Graphic		Snowflake Ball	January 15	Space Explorers	January 23	Tea for Three	January 31
Communications	January 9	Horse Fan Badge	January 16	JR Self Defense	January 24		
JR Sweet Shoppe	January 9	Japanese Marbling	January 16	Pet Care	January 24		
Mellow Out	January 9	JR Kidz Care	January 16	Top Chef	January 24		
Perfect Princess Party	January 9	Pets	January 16	Gold Award Workshop:			
Photography	January 9	Photography	January 16	Journeys (NEW)	January 25		
Smart Sitter	January 9	Just Jewelry		Gold Award Workshop:			
Everyone Belongs –		@ Hunterdon	January 20	Go For It! (OLD)	January 27		
Bonjour!	January 10	Snowflake Ball	January 22	Japanese Marbling	January 30		
Junior Self Defense	January 10	Brownie Safety Sense	January 23	Photography	January 30		
Photography	January 10	Japanese Marbling	January 23	Sky Search	January 30		
Gold Award Workshop:		Jeweler @ Hunterdon	January 23	Smart Sitter	January 30		

Apology from the Program Department: The Hearts of Service Program was set to rollout in November. With a few bumps in the road, the rollout has been delayed. The guidelines for this new program will be available in January of 2010

Your forms are back!!

- Troop Attendance
- Troop Dues
- Troop Status

<http://www.gshnj.org/index.php?p=24>